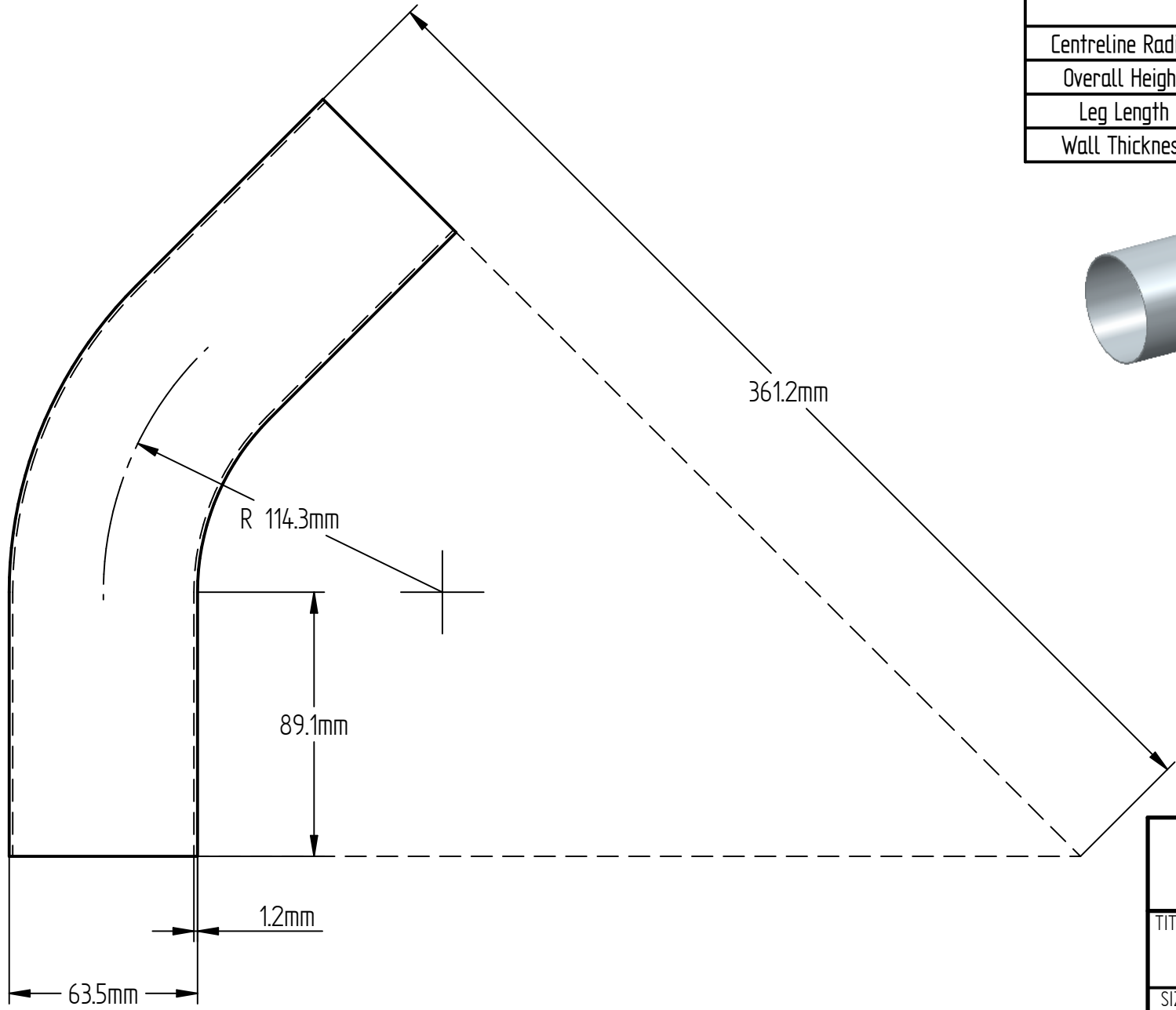
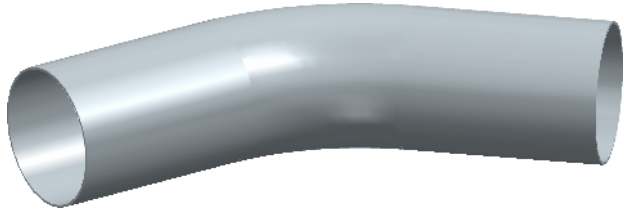


	Nominal Dimensions	Tolerance
Centreline Radius	114.3mm	Nominal
Overall Height	361.2mm	+/-1.5mm
Leg Length	89.1mm	Nominal
Wall Thickness	1.20mm	+0/-0.10mm



Ultibend INDUSTRIES INC		
TITLE 63.5 x 1.2mm 45 degree LL Bend		
SIZE A4	DWG NO 25244L	REV 001
		Publish Date: 20/02/18
		WEIGHT: 0. kg SHEET 1 OF 1