

WHITTAKERS CHOCOLATE FACTORY

CASE STUDY

SECTOR: FOOD & BEVERAGE

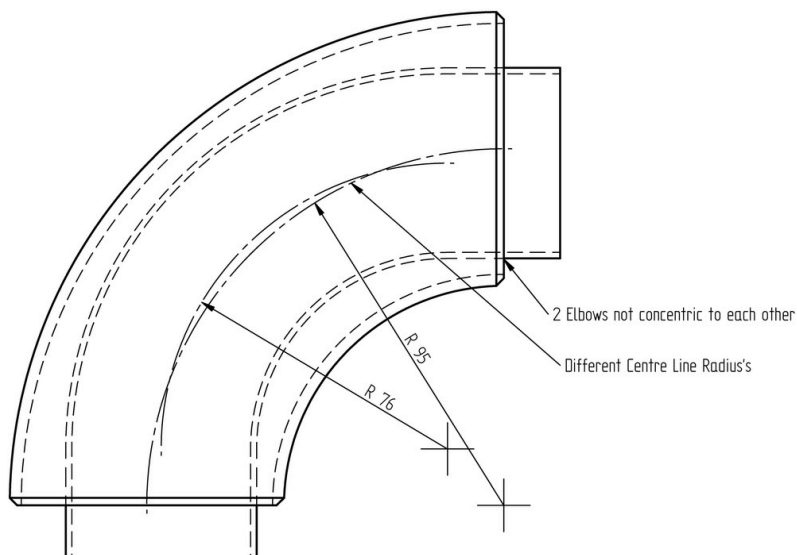
INDUSTRY: CONSUMER GOODS

BACKGROUND:

Lamb Engineering is a local engineering company specialising in ASME pipe welding, Ammonia pipe systems upgrades, Steam/Oil and Gas industry, and process pipework for the Food and Dairy industry. They work with a wide range of clients, but one in particular we have interest in is Whittakers Chocolate located about 500m from our factory.

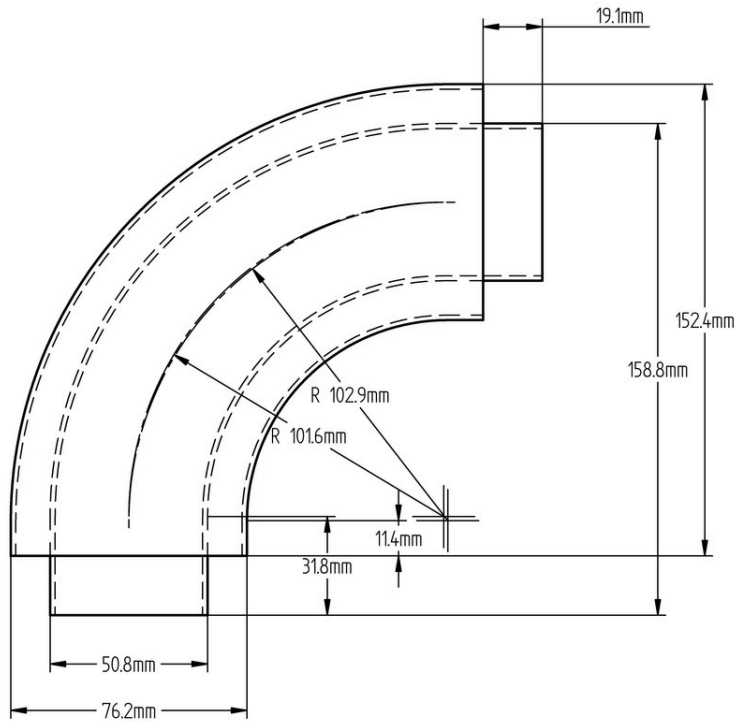
THE CHALLENGE

The challenge when working with chocolate is that it needs to be kept at a temperature that allows it to be pumped through the pipe work. To achieve this, warm water jacketed stainless steel tubes (typically using tubes 1" different in diameter) are used for the transfer of chocolate. The challenge with jacketing lines is that finding a combination of different diameter elbows that have similar bend radius to allow the tube lines to remain concentric is difficult. Some fabricators use schedule pipe bends for the outside pipeline, but this means the bend radius's are quite different, and the pipelines are a long way off being concentric.



THE SOLUTION

With an Ultibend combination of a NZ radius internal bend matched with a Zetan radius external bend 1" larger in diameter, the pipelines line up nicely using concentric end plates and are much easier and faster to install. Also, the straight difference between the 2 different specs of bends means that the straights of the internal elbow protrude past the external elbow face, allowing easier welding of the jacketed elbow into the pipeline.



THE RESULTS

Keeping the pipelines concentric is a huge time saver. Being able to use concentric end caps and therefore not having to align the end caps perfectly makes everything easier to put together.

The job runs smoother, faster and the end result is a lower overall project cost for the end client.








“ The smooth installation process saved us both time and money. The concentric end caps made aligning the two bends much easier. We couldn't have asked for a better solution, especially for a client like Whittaker's Chocolate.

- Jared Lamb Owner

“ We are happy to be able to supply the perfect fit to a unique problem. And are always keen to work with our customer to find solutions to any "out of the box" challenges they face.

-Morgan Turley,
General Manager
Ultibend Industries

Get in touch for any of your tube fitting challenges...

 <https://ultibend.com/>
 sales@ultibend.com
 +64 4 237 4060
 15 Raiha Street, Porirua 5022, New Zealand